

Art Room Model - IRITA

Height : 180

Chest : 90

Waist : 65

Hips : 95

Size : 38

Shoes : 39

Hair : : A.Kumral / L.Brown

Eyes : Mavi / Blue





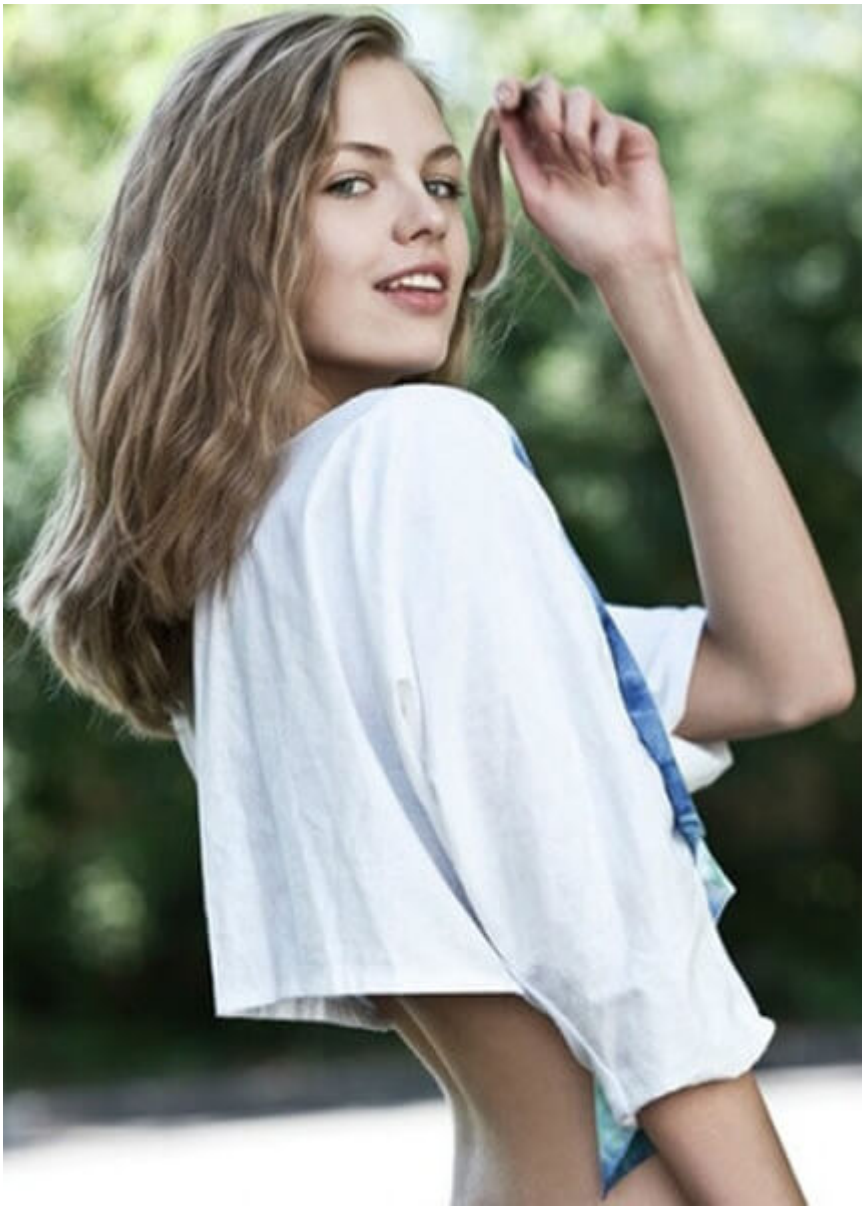






























Body by Victoria
with underwire cups and
padding, made by L.A. Perle
Chicago. She chose it for
its long neckline. Photo by
Robert M. O'Connell for
Victoria's Secret 2007. Body by



